



SAFETY HARBOR PUBLIC WORKS

CALL PUBLIC WORKS FIRST

Call Public Works for any of the following:



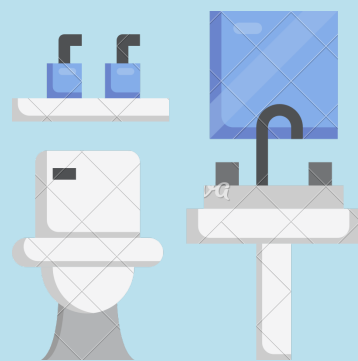
- Sidewalk Issues
- Potholes
- Water Leaks
- Sanitary Sewer Back-Ups
- Low Hanging Limbs (over roadways/sidewalks)
- Garbage, Recycling, and Special Pick-Ups
- Stormwater Drainage Issues
- Street Sign Issues
- Work in the City Right-of-Way

Call 727-724-1550

PUBLIC WORKS NEEDS YOUR HELP

Help to prevent sanitary sewer back-ups in your home and the City's gravity sewer system by following these simple steps:

- Do not flush napkins, wipes, paper towels, cotton balls, "flushable" wipes, dental floss, etc. These items tend to clog a home's sewer lines as they do not break down in water like toilet paper.
- Do not pour food, oils, and grease down the drain. This creates a blockage as grease and solids build-up over time in a home's sewer pipe and restrict flow.



WHEN IT RAINS, IT DRAINS.

Stormwater can pick up debris, chemicals, dirt, and other pollutants and flow into a storm sewer system that discharges to our local waterbodies. Help prevent stormwater pollution and drainage issues by following these simple steps:



- Pick up pet waste. Pet waste contains bacteria.
- Do not over fertilize or apply pesticides during the rainy season. Note, Pinellas County has a Fertilizer Ordinance that bans sale and use of certain fertilizers from June 1st-Sept. 30th.
- Do not blow yard clippings or leaves into the street. Once these enter the stormwater system they can clog storm drains and pipes causing flooding as well as causing harm to aquatic life once washed into the waterways.
- Do not drain your pool into the roadway/storm drain. Chlorine and saltwater can kill fish and pollute waterways. Drain pools into a vegetated area.

MISSED GARBAGE/RECYCLING PICK-UP?

Depending upon the address, residential garbage/yard waste/bulk pick-up occurs on Mondays, Tuesdays, and Wednesdays. Recycling occurs on Thursdays and Fridays. To avoid missed pick-ups follow these simple steps:



- Properly prepare garbage by placing trash in the City provided can. No more than 10 bulk items can be placed at the curb. Place bins and items 3' from cars and mailboxes. Bundle/tie yard waste items. Place loose yard waste in the City issued can or a 32-gallon can.
- Do not place brush, plastic bags, plastic wrap, batteries, or trash in the recycling bins. Only place clean, recyclables in the recycling bin.

